

# THE SOUTHERN HUNTER



Longwoods sunrise

SOUTHLAND BRANCH NZDA

March 2016

Branch email is: [enquiries@southlanddeerstalkers.org.nz](mailto:enquiries@southlanddeerstalkers.org.nz)

News Letter [douglasgordon@xtra.co.nz](mailto:douglasgordon@xtra.co.nz)

Branch website <http://www.southlanddeerstalkers.org.nz/>

Next Meeting Club Rooms Long Bush Hall

Wednesday 16<sup>th</sup> March 8pm

Executive Meeting at 7.00pm

## Guest Speaker

Greg from Custom Guns, (X outdoor world) Will talk on his shop and also give run down on range shoot.



## Presidents Report

Here we are 3 months into another new year. With the 2016 Roar only weeks away. I hope that if you have been successful in a ballot block you are able to make the most of it with good preparation and organisation.

In the latest Rod and Rifle magazine, there is a great article on Hunting Fitness. This in my mind is more important than if your rifle scope has mill dots or not. The fitter you can be, the more enjoyable the hunt, regardless about if you were successful or not. Well worth the read.

Once again we need to address hunter SAFETY and ETHICS. The need for good behaviour is more so now than ever before. Anti-hunter feeling is aroused by trespassing and bad behaviour with firearms. Us hunters usually have no audience to approve or disapprove of our actions while in the field. A real sportsman/woman will know and practice the NZDA code of Ethics and field rules. Like most hunters I have a personal code which is similar to hunting laws and NZDA code. So learn these and use as a base to form one self into someone who conducts them selves in a Responsible and Ethical manner.

### SAFETY.

Safety must be practiced at all times when in the field by one self, and around others.. Family members and other hunters will appreciate the wearing of HIGH VIS clothing. This has served hunters well in the pass and will continue in the future.

### “ BACKING THE FUTURE”

This was the theme for 2015 Conference.

As a branch of NZDA we can do our bit as well. At last months committee meeting we discuss introducing, Take a Kid out weekend. Members would have an opportunity to bring a youngster for an outdoors experience weekend. This would entail: camping out , fishing , safety around water, etc. There will be an up date later in the year.

On a final note I would like to thank those members who give their time for the working bee and we got the hall finished at last. Good job guys

SLR.



## Editorial

It was good to have a fine calm day and an adequate supply of members for the working bee on the Clubrooms. Good to see, better news is that we finished the job in hand. A big thanks to the crew who turned up. Especially Dave Howden for leading us by example.

It is now March soon the Roar, Duck shooting then before we know it the AGM. There is some mutterings that the club needs to organise more activities. This would be great. But to do this we need Ideas and leaders. So now's the chance as always any committee/ executive is better off with some good fresh blood from time to time. We need you if you are keen, come to the meetings, tell us your ideas for the club. Help us make them happen, stand for the executive if really keen.

**To be an active club the club needs active members.**



Working Bee in action

---

### **New Members please welcome them**

Jason Young, Erin Garrick

A big thanks to Yunca for their recent support



## MEMBERSHIP PAYMENTS

### SOUTHLAND BRANCH NZDA

As the Branch now operates through the centralised membership system ALL new and renewal subscriptions must be made through the national office not the Branch.

Postal payments to NZDA PO BOX 6514

MARION SQUARE

WELLINGTON 6141.

**Electronic payments to NZDA HQ ACCOUNT**

**03-0558-0139562-04 ..**

Please ensure that the correct details are entered when renewing IE name and address on postal and Name and Branch on electronic payments .and the CORRECT BANK ACCOUNT NUMBER IS ENTERED

This reminder is being put out as some members have paid direct to the branch account, as the account is not now checked on a regular basis for membership renewal a time lag will occur before any incorrect payments are picked up, and then forwarded onto Wellington.

**Notice for members**

**If you change your address or your contact details like email address you must notify the branch and the national office.**

If we do not have correct contact details how can we keep you informed from the branch, and national office cannot send out membership cards or the magazines, so it is important to have correct Postal as well as Email Addresses.

Freeze Dri

## **BACK COUNTRY** *Cuisine*

**Still available at a great price to Branch Members**

**Contact Gus Ronald [gus.ronald@xtra.co.nz](mailto:gus.ronald@xtra.co.nz) 03 213 0351 For a price list**

### **Branch Range Shoot**

To be held Saturday 19<sup>th</sup> March at the Invercargill pistol Club Range.

Pit Road North Sandy Point

For Club members only

**Start 9am sharp.**

#### **Silhouette Shoot**

This is a .22R only shoot you will require 40 rounds of ammo (plus practice)

Shooting is at metal targets at ranges from 25 to 100 metres.

You will need to bring your own lunch, a camp or deck chair could be useful.

All persons must sign in at the Pistol Club's club room and park vehicles in the car park there.

All firearms unloaded actions open when not on the actual range and shooting (that is from when you leave your vehicle.)

**The wearing of hearing protection and safety glasses is compulsory.**

As is the obeying of the pistol club's range rules (which are on the wall where you sign in) and are not to wander around the other club ranges unsupervised.

All inquiries to Doug Gordon 2166383 or Dave Howden 2130962 (including those for a possible cancellation for rough weather.)

### **Cost**

**Silhouette Shoot Only \$15**



# Invercargill Rifle Club

## Open day registration

**Please read the information below and fill in your details, then e-mail the form back to us at....**

**[invercargillrifleclub@gmail.com](mailto:invercargillrifleclub@gmail.com)**

\$20 on entry at the gate.

BBQ, snacks and soft drinks / water available.

Cash only.

You will need to bring a rifle and 20-30 rounds of ammo plus grade 4 or higher hearing protection.

If it's wet you might want a mat or tarp to lie on. Bipods, front rests and sand bags are helpful if you have them.

### **Safety:**

The range officers in the orange vests are boss! Please listen to all their instructions.

Before you arrive, firearms should already be unloaded, magazines out etc and bolts out. Nothing may be put in the rifle until the range officer or scorer says so.

Only one round to be loaded at a time

Hearing protection is a must! Even when standing behind the shooters.

Stand behind the firing line at all times

The maximum calibre allowed on the range is 8mm (0.315 in). No muzzle breaks.

The maximum muzzle velocity 1000m/sec (3280/FPS)

The maximum muzzle energy 4300 joules (3171 FPE)

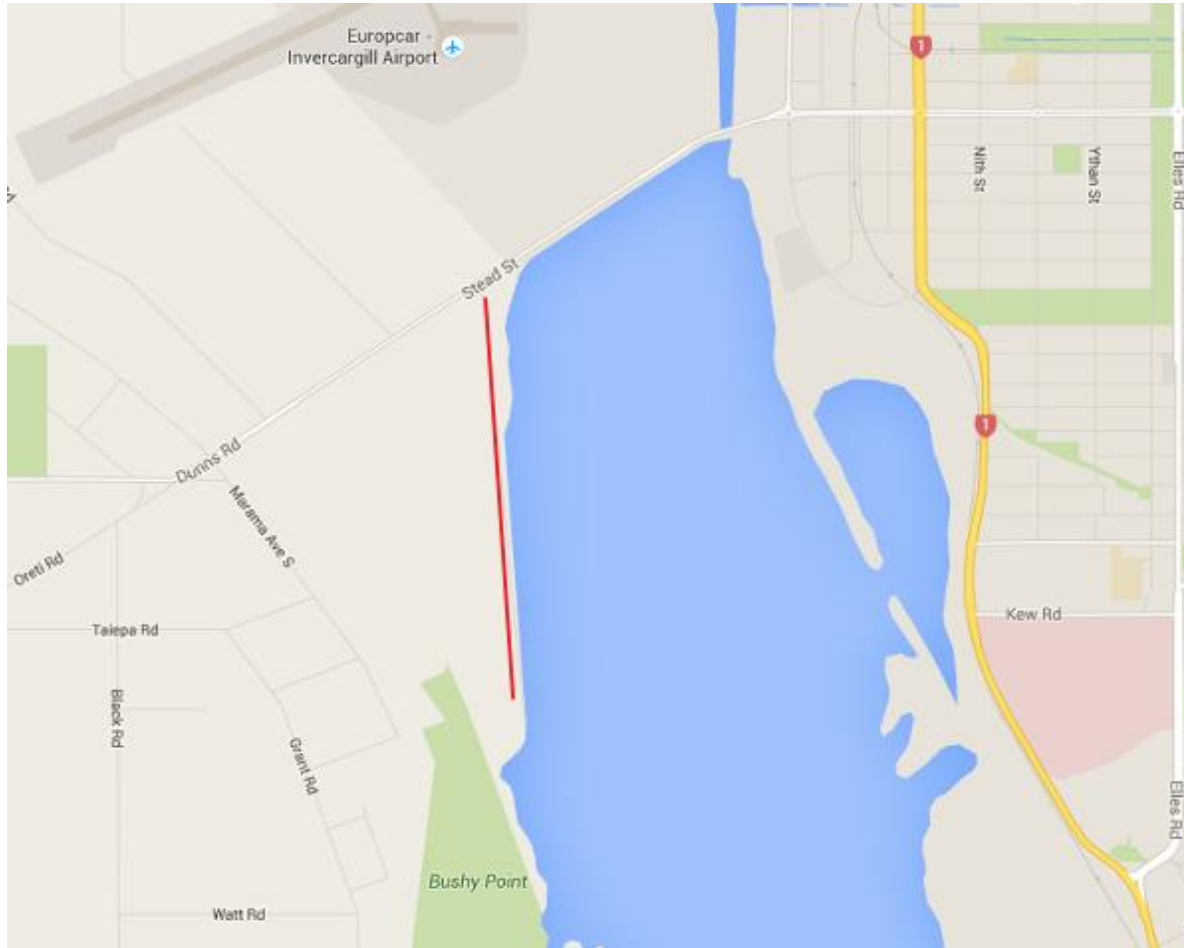
On this range, we are not allowed incendiary rounds such as tracers or rounds with a steel core or of monolithic construction.

If you have a firearms license, we'll need to see it at the gate.



**You need to be there by 10am to sight in. If you don't sight in at 100 yards, you can't do the 300 shoot!**

**Location:** about a km up the road off Stead Street.



**Your details:**

Name:

Phone:

Email:

Email this form or your details to us at....

[invercargillrifleclub@gmail.com](mailto:invercargillrifleclub@gmail.com)

## This Month's Quiz

1. Who Wrote "The Traveling Hunter"?
2. Wet Jacket Arm and Herrick creek relate to hunting for what species of Deer?
3. Which is the most northern in Fiordland Long Island or Long Sound?
4. Where are SVÖRD knives made?
5. Who feature in the NZ Hunter Adventures TV programmes?

*The following article first appeared in the AsureQuality weekly bulletin prior to Christmas . Lacking any stories I have reproduced it here.*

### **Rat Patrol – By Doug Gordon**

In November of this year I got to lead another party of Southland Deerstalkers to Mason's Bay on Stewart Island, where we undertook rat trapping work. This has occurred during the spring for the last nine years and is ongoing. Parties (of normally four) set and check approximately 400 rat traps at Masons Bay in and around a large island of native bush in between the open flats of Island Hill and the sand hills/sea in the Homestead/Duck Creek area of the bay (which is the big bay on the west coast of the island). The object of the trapping is to give the birds on this Island of bush a better chance to breed, without the rats.



The view from Island Hill itself, looking to the hills which are trapped - the sea and the Bay are behind the hills. The trapped area runs from the sand hill on the left (big sand hill) to the gap with sand pouring through it on the right (big sand pass). The Island Hill itself is half an hour on the track to Freshwater (the other side of the island) and is not part of the trapped area.

This was my sixth such trip, and the third as a party leader. The four of us were flown to the beach south of Duck Creek by Stewart Island Air (the air fares being subsidised by the Department of Conservation). From the beach we carted our packs and food over the track through the sand dunes to Duck Creek. On the other side of which starts the old access road that goes up through the native bush along Duck Creek to the old Island Hill Homestead (now local DOC HQ). This track passes the large DOC tramper's hut not far from its start. From the old homestead (which was unstaffed on this occasion) the track to Freshwater Landing is followed down past the old Island Hill Woolshed for about ten minutes before the track we needed to take branches off to the Homestead Block Hunters hut, our accommodation for the week. The location is right next to the Island of Bush.





*Woolshed*



*Old Hunter Hut*



*New Hunter Hut*

The “new hunter hut” is a newish 4 bunk hut built in 2008 by the Rakiura Hunters Camp Trust to replace the old hut on the block. These huts are for hunters and cost \$30 per person in the permitted hunting party. There is currently about 18 huts on the island. The old hut was a converted dark room from deer farming days at Island Hill. Farming at Island Hill had ceased about 1986 when the lease was surrendered to the crown. This new hut was built at the same time as an identical hut on the neighbouring Martins Creek block, where yours truly was one of the builders.



trapped area. From there the trap line climbs west, to above the bush on its west side, then circles back

As the rain that arrived not long after us set in, the first day was spent at the hut before we set off to check the traps. These are divided into 4 groups. Three of these groups were done this day with two members doing one group as one of them was new to the Island. I had what is known as the fence line to do. This lot follows the old fence line along the east side of the bush to the big sand pass, which is the north boundary of the

into it and back down to finish against the old fence line again. I normally stop for a bite to eat when doing this line while on the top of the hill which provides a good view of the bay. Gardening gloves were worn and hand sanitizer taken as the rats become a bit messy to handle, when dead for some time. There is normally two weeks between parties. This time the last party failed to get in so some of the dead rats were 5 weeks old while others were fresh.

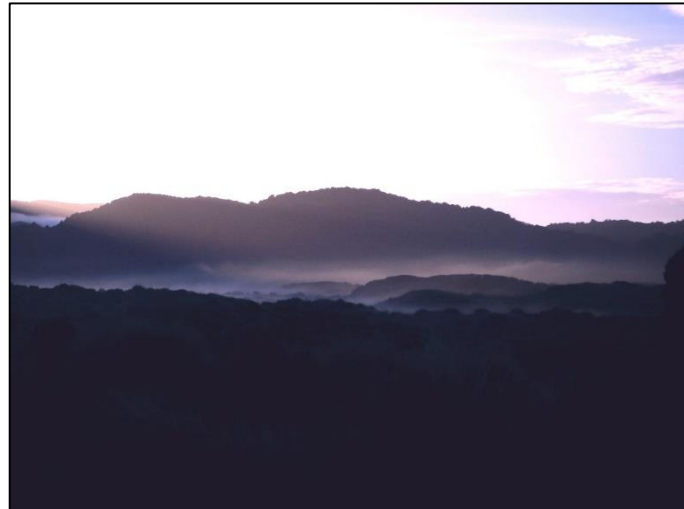
The rat traps used are the Victor type - a good old fashioned wooden one, but with a hinged cover (netting covered opening at one end to allow rats in) that is designed to keep the native birds especially the Kiwi out. For bait, until the last two years, we have used peanut butter which is very good but inclined to go mouldy (though I have found freshly dead rats in mouldy bait). It also puts one off peanut butter. We are now largely using a new purpose built orange bait also used in possum trapping. The rats seem to like either or.



The following day, three of us finished off the last group of traps which were down and around both sides of Duck Creek. After this we largely had the next two days to ourselves to hunt and explore. This year as often can be the case this was limited by the weather. Some firewood was cut, the filter cleaned on the water tank, and I cleared a trap line of regrowth and replaced missing markers. Most of the serious hunting was done at first or last light - this got us out in time for some sunrises or sunsets.



*Sunrise over the Duck Creek*



*Sunrise over the Islands country*



Often we would see the odd kiwi out and about in daylight, more so when hunting the open country in the direction of Island Hill, and the old disused airstrip than in the bush its self. This year Peter had his wife join him when the rest of us left at the end of the trip. They spent three days spotting Kiwis and saw five. I have seen some on every trip and sometimes around five, even a pair of them twice! I have not had much luck photographing them but others have managed it. A lot of people actually come to Masons Bay looking for the chance to see a Kiwi in the wild as they are inclined to be around in daylight.

We have noticed a build-up in the number of Tui's and Bellbirds evident on the eastern sheltered side of the trap area over the years. This is a pleasing result from our efforts in killing the rats. Often the odd Bush Pidgeon is seen as well. A couple of years ago I think I saw a saddleback. But by the time I got the camera out it was gone.



All too soon we are going around the trap lines for the second time, after which it is time to pack up for the early morning flight back to Invercargill, and civilisation - the trip being over for another year. They are always a much enjoyed event, even if we were



unsuccessful in the deer hunting, as we were this year for the first time in several years. The rat numbers being trapped have dropped from over 100 on my first trip nine years ago to only 21 this year. These were mainly caught around the outside of the area with only one coming from the inner spiral line in the middle of the area.

This project may be only a small drop in the big ocean, but it's a start, and something practical to help maintain the local native bird population.

*This photo was taken by Robin Bradley on one of the trips*

The Following are the Branch competition rules printed here as a reminder of what's required for the entries in this year's competitions coming up in May.

Please pay your sub as you need to be financial when you shoot that trophy ( take that photo) and at the time of the AGM.

**After AGM no newsletters for those still to pay.**

### ANTLER, HORN & TUSK COMPETITIONS.

RED DEER	-	RED DEER ROSEBOWL
WAPITI	-	WAPITI ROSEBOWL (FIORDLAND DEER)
FALLOW DEER	-	FALLOW DEER ROSEBOWL
CHAMOIS / THAR	-	DAVID GUNN MEMORIAL CUP
PIG TUSKS	-	BOAR TROPHY
GOAT	-	GOAT TROPHY
WHITETAIL DEER	-	SILVER TRAY
SIKA DEER	-	CERTIFICATE
RUSA DEER	-	CERTIFICATE
SAMBAR DEER	-	CERTIFICATE
WILD SHEEP	-	CERTIFICATE

1. Open to all financial members of Southland Branch NZDA.
2. Members must be financial at the time the trophy was taken and at the time of the competition.
3. The trophy must have been taken in N.Z. within 12 months prior to Trophy night.
4. Members may enter more than one trophy in any competition.
5. Awards are to be made on the majority recommendation of the judges and to be based on visual judgement with Douglas Score levels only as a guide.
6. Trophy to be obtained in a legal sportsmanlike manner. Animals shot in Game Park or similar safari type operations will not be eligible.
7. Trophy ~~must~~ <sup>and should be</sup> be unmounted (full skull without lower jaw) and be in clean and wholesome condition when measured.
8. Trophy may be measured at any time by an approved competition measurer but must be present on trophy night for the visual comparison.
9. At the time of entry trophy must be in a natural state, ie as when shot. There must be no interference such as sharpening of points, removal of points, artificial colouring etc.
10. All entries should have the entrants name and watershed where trophy was taken attached.
11. The judges reserve the right to disqualify any trophy which does not conform to the above rules.

#### Special Considerations

- 12(a) Smith & Rainsford Cup. Awarded for the best head of any species. May be awarded for antler or horn trophies after consideration of rule 5.
- 12(b) President's Cup : Classical head. May be awarded for antler trophies only. Trophies need not necessarily be the best of the species entered but must conform to "classic" antler formation eg Red 12, 14 points, Whitetail 8 points etc.
- 12(c) Spiker's Cup: Awarded for the best antlers, horn or tusks entered by a member under the age of 21 years.
- 12(d) Boar Trophy: Awarded for the best drawn pig tusks.
- 12(e) Wapiti Rosebowl (Fiordland Deer) To conform with 1987 National Competition rules; -
  1. All trophies taken within the area covered by the Wapiti Blocks must be

2. entered and judged separately from those taken elsewhere in the country.  
The above trophies will be treated as a single class to be known as Fiordland Deer and will compete for the present trophy "Wapiti Rosebowl" for wapiti.

- 12(f) David Gunn Memorial Trophy. Awarded for the best Chamois or Thar. Consideration must be given to Douglas Score equivalent for this section.
- 12(g) Certificates will be awarded for the winning entry in all sections.
13. In the event of questions not covered by these rules judges are referred to the National Competition Rules for guidance.
14. Disputes are to be settled on trophy night by a disputes committee appointed by the Southland Branch President.

#### TANNED SKIN COMPETITION.

For the best skin of a game animal home tanned during the previous 12 months.

#### PHOTOGRAPHIC COMPETITIONS.

##### General rules.

1. Open to all financial members of Southland Branch NZDA.
2. Members must be financial at the time the photograph/slide was taken and at the time of entry.
3. All entrants to be of amateur standing.
4. Photographs must have been taken in NZ and developed within the 12 months prior to competition night. Shots from aircraft will not be allowed.
5. Entrants may submit a maximum of five prints in each category.
6. Entries must be in the judges hands on the Saturday prior to Trophy Night.
7. There is no restriction on the equipment used. Entries must be an original and not a copy of any existing print or slide, except that a print of a colour slide may be entered as long as the slide is available for inspection by the judges.
8. Maximum size for prints shall be 150 x 100 millimetres (6 x 4 inches).
9. All entries should be clearly marked with the entrants name and indicate which category they are entered in and should have a title. Judges reserve the right to redirect any entry clearly entered in the incorrect category.
10. The Branch requires a copy of all winning entries for its collection.

##### Special Rules Categories Colour Prints

- 11(a) Game Animals.  
Game animals are defined as live Wapiti, Red, Fallow, Whitetail, Sika, Sambar & Rusa Deer, Chamois, Thar, Wild Goat, Wild Pig and Wild Sheep. Entries may be



of any of the defined wild animals in their natural surroundings. Entries of dead animals will be discounted from this category.

- 11(b) Wildlife.  
Wildlife means any live wildlife other than game animals in its natural surroundings.
- 11(c) Scenic.  
Entries are to be of a scenic nature relative to stalking or stalking country.
- 11(d) Topical or Stalking Interest.  
Entries must contain some evidence of human activity related to hunting or of a hunting nature.
- 12. Judging: Judges shall take into account the following points:-
  - a. Subject matter to be in accordance with the relevant portion of rule 11(a) - (d) with special emphasis on hunting ability where applicable. 75 points.
  - b. Photographic technique. This includes correct exposure, focusing, composition, background etc. 20 points.
  - c. Presentation. ie scratches marks etc. 5 points.
- 13. Judges reserve the right to disqualify any entry which does not conform with any of the rules.
- 14. Disputes are to be settled on trophy night by a disputes committee appointed by Southland Branch President.

#### Video competition.

General rules of photographic competitions apply except that the video film must have been taken within two (2) years.

Videos should not exceed 15 minutes in viewing time.

## Sponsors

Southland Branch would like to thank its regular sponsors and recommend them to its members.

Hunting and Fishing Invercargill

Southern Adventure

H&J's Outdoor World

Stewart Island Flights

### Last Month's Quiz

- 1. Who wrote Mountain Monarchs? **Ken Tuskin**
- 2. Who produced the Monarch hunting rifle? **BSA**
- 3. Where did CAC make ammo? **Auckland NZ**
- 4. What breed of trophy deer would you hunt in the Doon River Valley? **Wapiti**
- 5. What is the largest tributary of the Greenstone River? **The Caples River**

## Rifle Sighting In

With the start of daylight saving the Invercargill pistol Club range will be again available to Financial Members for the sighting in of Rifles on Wednesday nights from 5.30 pm finishing 7pm. At the cost of \$10 per person. Ear & Eye protection required

To use this facility you MUST contact the roistered person in charge **no later** than the Sunday night before.

23<sup>rd</sup> March Nathan Dawson 027 235 8063

30<sup>th</sup> March Doug Gordon 03 216 6383/ 027 637 2206 after 4pm

## Wapiti Lodge, Thicket Burn Hut & Red Stag Lodge Mavora



Bookings to Neville & Carol Miller Phone (03)216 8654

email [nandc43@gmail.com](mailto:nandc43@gmail.com)

43 Bain St Invercargill

**Deposits for any bookings to be received within seven days or bookings will be cancelled.**

### Club Office Bearers

**President:** S. Robinson 215 7897 **Vice President:** B. McNaughton 216 3365

**Jnr Vice President ( vacant)** **Secretary:** D Howden ( Acting) 213 0962

**Treasurer** T Smalley **Magazine Editor:** D. Gordon 216 6383

**Immediate past President** N Dawson 235 8852

**Executive:** N. Miller ( Huts) R. Phillips ( Membership)

